

Automation Ethics

Tigris Mendez
Ethical AI
Dr. Jiao Junfeng

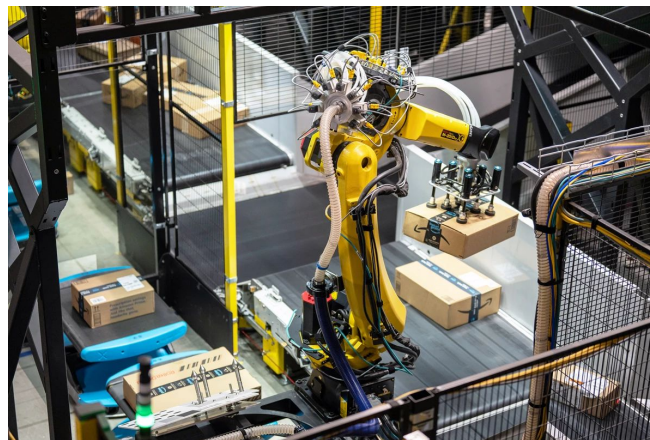
Topics

- **Job Market** and automation
- **Education** system reform in preparation for an automated Job Market
- **Regulation** surrounding automation
- **Ethics** of Automation and government reaction



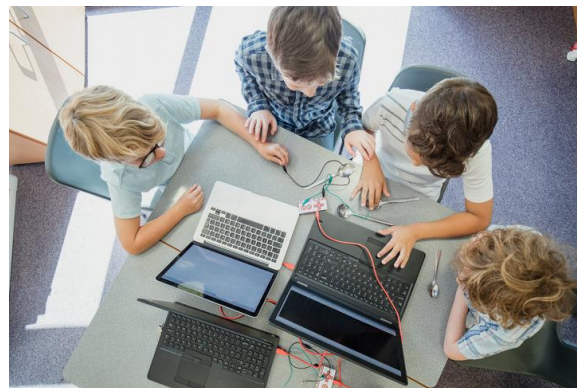
The Job Market and Automation

- Automation displaces more jobs than it creates
- Every new robot contributing to automation displaces **3.3 jobs**
- Jobs created by automation tend to be **high-skilled** jobs.
- Through this process, **low-skilled** jobs become **high-skilled** ones



Education

- During COVID-19 unemployment rose from **2.1% to 8.4%** for Bachelor degree holders but **3.4% to 17.3%** for those with only high school education.
- **91%** of American children attend a public school
- U.S. Schools are underfunded by almost ***\$150 billion annually***
- Schools districts of 50% Black and Latinx enrollment are nearly *twice* as likely to be underfunded



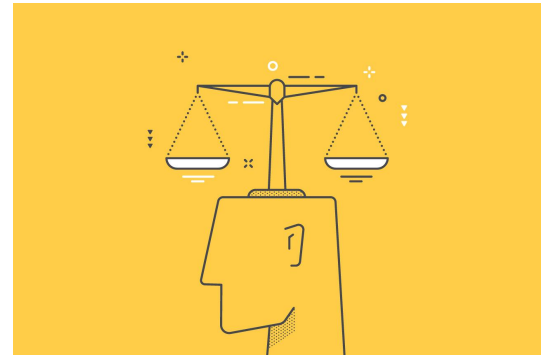
Regulation

- 50 to 70 percent of U.S. wage inequality growth between 1980 and 2016 was **caused by automation**
- There is **no payroll tax** on robots or automation
- Research and development of a **Universal Basic Income** may prove to be helpful but funding it is an issue
- Prioritize technologies that **augment** work instead of those that **automate** work



Ethics

- Kantian Deontology Ethics
 - “Each [person] as possessed of equal worth and deserving of equal respect”
 - People should have control over their education
- Consequentialism
 - Securing funding for education diverts funding away from other government initiatives
- Buddhist ethics
 - Providing a society where individuals can work toward fulfillment



Pictures

[Defining Factory Automation and Its Benefits | PTC](#)

[How a universal model is helping one generation of robots train the next - Amazon Science](#)

[Preparing students for an automated future | Stanford Graduate School of Education](#)

[Ethics or Compliance in a Crisis? \(mit.edu\)](#)